

The logo features a circular floral emblem on the left, followed by the word "VRAJ" in a large, elegant serif font, "RESIDENCY" in a smaller, clean sans-serif font below it, and a large, stylized number "2" to the right.

VRAJ  
RESIDENCY 2

2 & 3 BHK  
Luxurious Apartments & Shops

Project by : **GANDHI BUILDCON**

# VRAJ RESIDENCY 2

## ELEGANT LIVING BECKONS YOU

Uplifting the urban living standards, Vraj Residency 2 is all set to end your quest for fine living.

Located just off the upbeat Science City road, this upcoming new icon of modern living is designed to offer classy living.

Come; explore a new world of possibilities!



EXPLORE THE HEIGHT OF CLASSY LIVING





### AVAIL ALL THAT REALLY MATTERS

Vraj Residency 2 is designed to give a beautiful living experience to all in the family. From kids to the elders, everyone will have something to rejoice here.



SECURITY



C.C. TV CAMERA



PARKING AT GROUND & BASEMENT



WATER SUPPLY



AUTOMATIC LIFT



LANDSCAPE GARDEN



SENIOR CITIZEN SITTING



CHILDREN PLAY AREA

**GROUND FLOOR**



18.00 MTS. WIDE T.P.S. ROAD

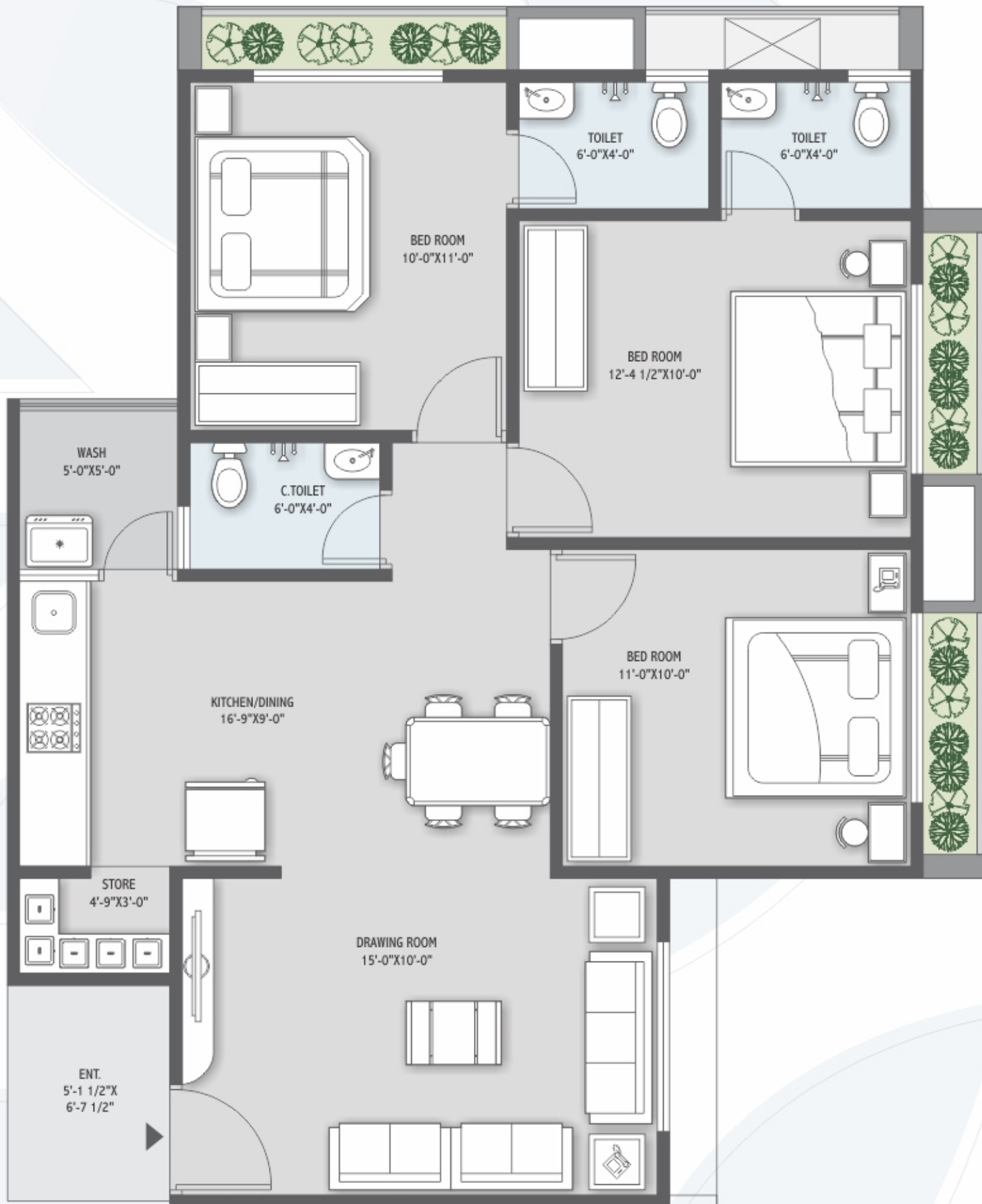
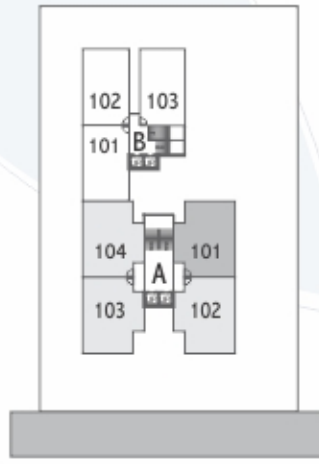
**TYPICAL FLOOR**  
1<sup>ST</sup> TO 11<sup>TH</sup> Floor Plan (1<sup>ST</sup> floor with terrace)



IT'S TIME TO LET YOUR RESIDENCE  
REFLECT YOUR STATUS



**BLOCK - A - 3BHK**  
Typical Floor



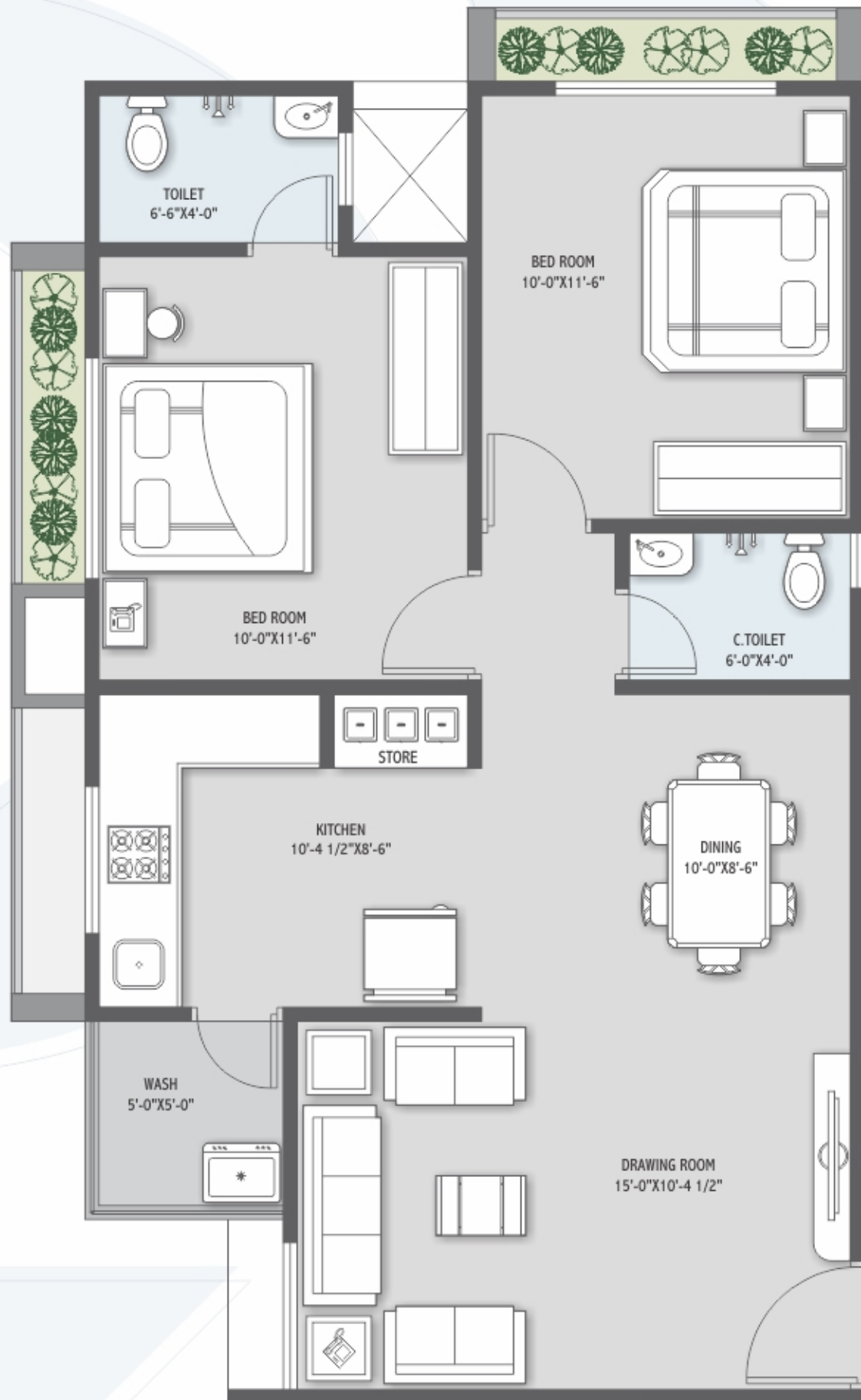
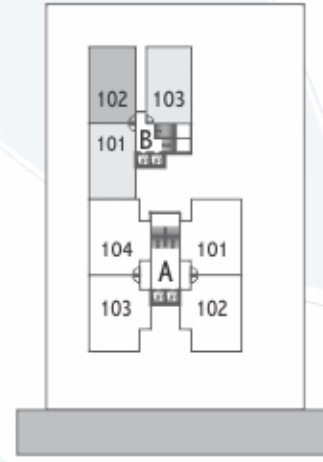


**MAKING UPWARD LIVING A REALITY**

Live in a not-so-cluttered area, yet with all the important avenues nearby.



**BLOCK - B - 2BHK**  
Typical Floor





## SPECIFICATIONS

### RCC

Quality controlled earth quake resistant, R.C.C. frame structure.

### FLOORING

Good quality vitrified tiles flooring.

### KITCHEN

Granite platform with SS sink.  
Decorative tiles up to lintel level.

### KITCHEN WASH AREA

Kota stone or similar vitrified tiles floor with dado of glazed tiles.  
Electric point for washing machine.

### BATHROOMS / PLUMBING

Premium branded C.P. fitting premium branded sanitary ware.  
Glazed tiles dado up to lintel level.

### DOORS

Main Door - Flush doors with laminate finish.  
Other Doors - Flush doors.

### SECURITY

24 x 7 security with CCTV surveillance at entrance gate and ground floor foyer area.

### WINDOWS

Powder coated aluminum section with good quality glass.

### ELECTRIFICATION

Adequate points as per architecture drawings.  
Concealed electrification with good quality ISI copper wire/cable.  
Premium branded modular switches & accessories & distribution board with MCB & ELCB.

### PAINT

Internal walls finished with wall putty, external walls acrylic paint.

### LIFT

Fully automatic elevators.

### TERRACE

China mosaic with required water proofing on terrace.



**Site Add. :** Opp. Wind Chimes Flat, Nr. Jeevan Sathi Party Plot, Bhadaj Science City Circle, S.P. Ring Road, Ahmedabad.

RERA REG. NO.: PR/GJ/AHMEDABAD/AHMEDABAD CITY/AUDA/MAA05545/120619

RERA Website: [www.gujrera.gujarat.gov.in](http://www.gujrera.gujarat.gov.in)

### NOTES

- All dimensions shown in the plans are approximate, average, unfinished and subject to variations.
- The brochure attached along is just for reference purpose and is not a part of the legal document. Also, the furniture shown in the plan (location as well as dimensions) is only for reference and is not included in the deal.



Developer

**GANDHI  
BUILDCON**

Office Add. : 22/1, First Floor, Magnet Corporate Park  
B/h. Intas Corporate House, S.G. Road, Ahmedabad  
E : [vrajbhadaj@yahoo.com](mailto:vrajbhadaj@yahoo.com)

Call : +91 99797 99888, +91 98251 40067, +91 94081 33618

Architect

**M. S. Associates**

Ahmedabad

Structural Engineer

**Vijay Mehta**

Ahmedabad